

## Description

DS1 Series Pressure Switch opens and closes electrical circuit depends on pressure increase or decrease. Working pressure is adjustable between 0,1 bar and 400 bar. System has adjustable feature while system is working. They can be used under all compressed air, liquids or gases.

- Compact and economic design
- NA/NC Socket
- Reproducibility of pressure switch in %3
- NBR, HNBR, VITON seal equipment.
- Body material stainless steel, brass, steel options.

## Applications

- Hydraulic and mobile hydraulic
- Pneumatics
- Heavy Duty
- All compressed air, liquids or gases.



## Technical Features

Mechanical Connection	: G1/4" , G1/8" , 1/4" BSPT , 1/8" BSPT , M10x1,0 , M12 x 1,5 , 1/8" NPT , 1/4" NPT
Reproducibility	: Reproducibility of adjusted pressure in %3
Working Temperature ( DIN EN 60068-2-27)	: -40 °C...+85 °C
Shock Test ( DIN EN 60068-2-27:1993 )	: 20 g ( Test Time 30 min )
Working Cycle	: 30 g
Viscosity	: 5 000 000 Cycle
Electrical Connection Feature	: Between 10 ... 800 mm2/sec
	: 250 VAC 5A

### Notes

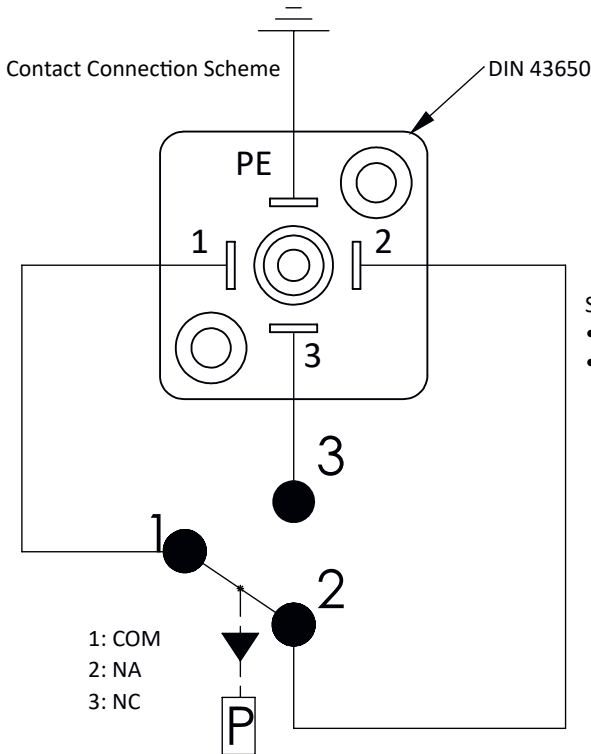
These values are maximum values and they can not be used at the same me.  
When you need to use the pressure switch in aggressive chemicals or fluids please contact with us.  
You must stict to rules of clearance standarts Hydraulic oils (fluids). Use filteraon to blocking system errors. It is effecve for long working life of pressure switches. Please avoid using out of indicated values to have a long service from pressure switch

Order Codes

Model	Body	Sealing Type	Mechanical Connection	Pressure			Set Pressure	Pressure Condition		
				Code	Pressure Range (bar)	P <sub>max</sub>				
<b>DS1</b> Model Pressure Switch	<b>Y</b> Pirinç "MS58"	<b>V</b> VITON	<b>A3</b> G1/4"				If you need a product that adjusted before, you can write pressure value here.	<b>D</b> <i>Dropping set pressure</i> <b>Y</b> <i>Rising set pressure</i>		
	<b>Z</b> Paslanmaz "316 L"	<b>E</b> EPDM	<b>A4</b> G1/8"							
	If you do not indicate any body type, It is delivered as zinc-plated stainless body.	If you do not indicate any leakageproof type, It is delivered as "NBR"	<b>S3</b> 1/4" BSPT						<b>002</b> 0,1 ... 2	40 bar
			<b>S4</b> 1/8" BSPT						<b>012</b> 1 ... 12	40 bar
			<b>B1</b> M10 x1,0						<b>100</b> 5 ... 100	600 bar
			<b>B3</b> M12x1,5						<b>200</b> 20 ... 200	600 bar
			<b>N3</b> 1/8"NPT						<b>400</b> 50 ... 400	600 bar
			<b>N4</b> 1/4"NPT							

**Note:**  
Minimum order pieces of all product which is beginning with DS1 A3 ... codes. Order pieces must be 10 and multiples of 10.

Electrical Connection Types

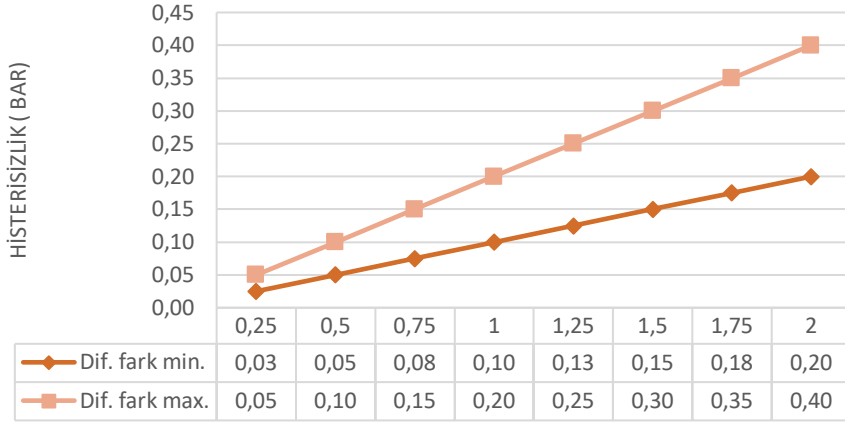


- Switch Function:
- Terminal 1 - 2 :It has current in case of pressure increases. (NA)
  - Terminal 1 - 3 :It has current in case of pressure decreases or there is no pressure.(NC)

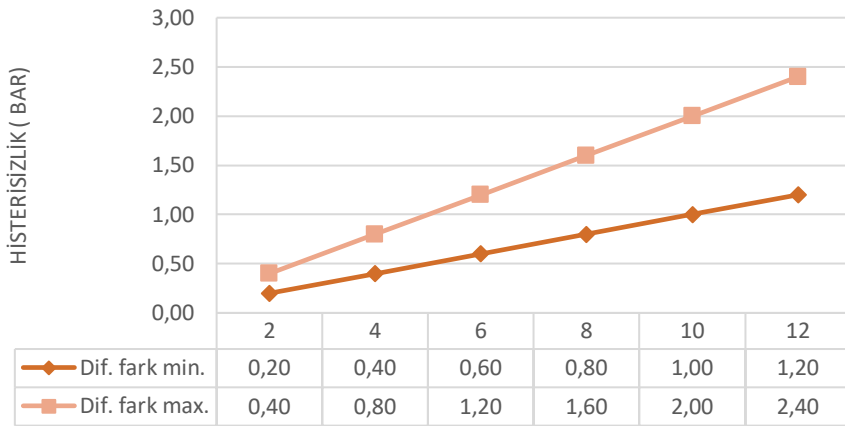
Electrical Connection	3-TERMINAL
Maximum Touching Surface	0,5mm <sup>2</sup>
Minimum Current	1mA 12 VDC
Maksimum Current	3A 130 VAC
Cable Length	2 meter

## Pressure Differential Difference Graphics

Working Pressure : Adjustable between 0,1 bar ..... 2 bar.  
System pressure Max. ( Pmax ) : 40 bar  
Type : Diaphragm

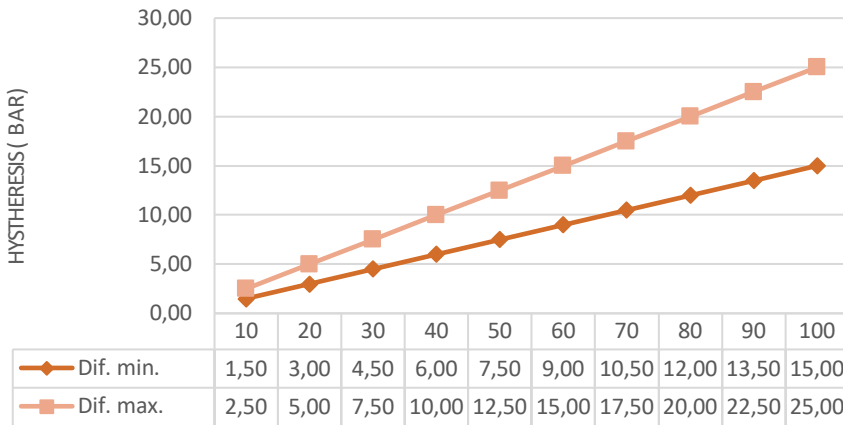


Working Pressure : Adjustable between 1 bar ..... 12 bar .  
System Pressure Max. ( Pmax ) : 40 bar  
Type : Diaphragm

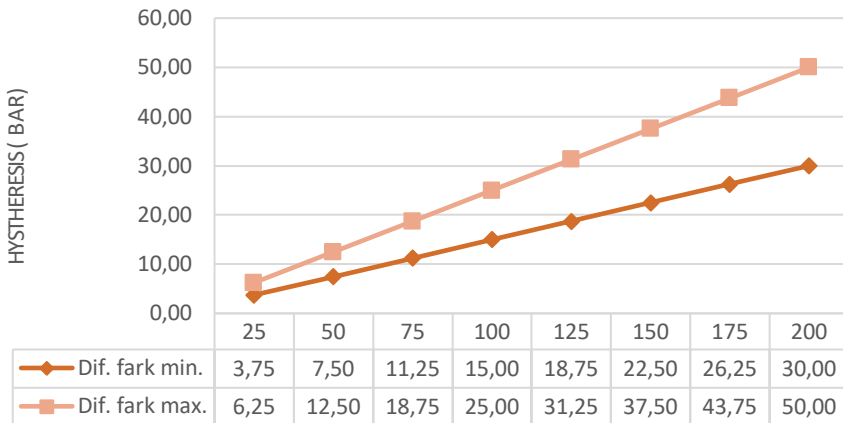


Pressure Differential Difference Graphics

Working Pressure : Adjustable between 10 bar ..... 100 bar.  
System pressure Max. ( Pmax ) : 600 bar  
Type : Piston

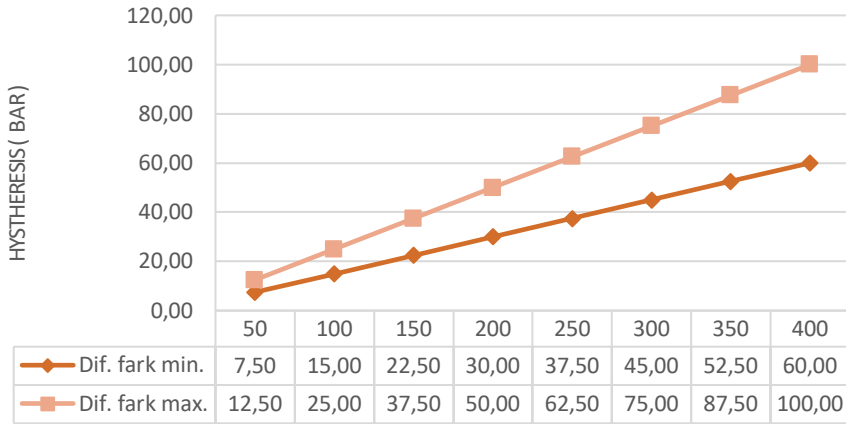


Working Pressure : Adjustable between 20 bar ..... 200 bar .  
System Pressure Max. ( Pmax ) : 600 bar  
Type : Piston



Pressure Differential Difference Graphics

Working Pressure : Adjustable between 20 bar ..... 400 bar.  
System pressure Max. ( Pmax ) : 600 bar  
Type : Piston



Technical Dimensions

